

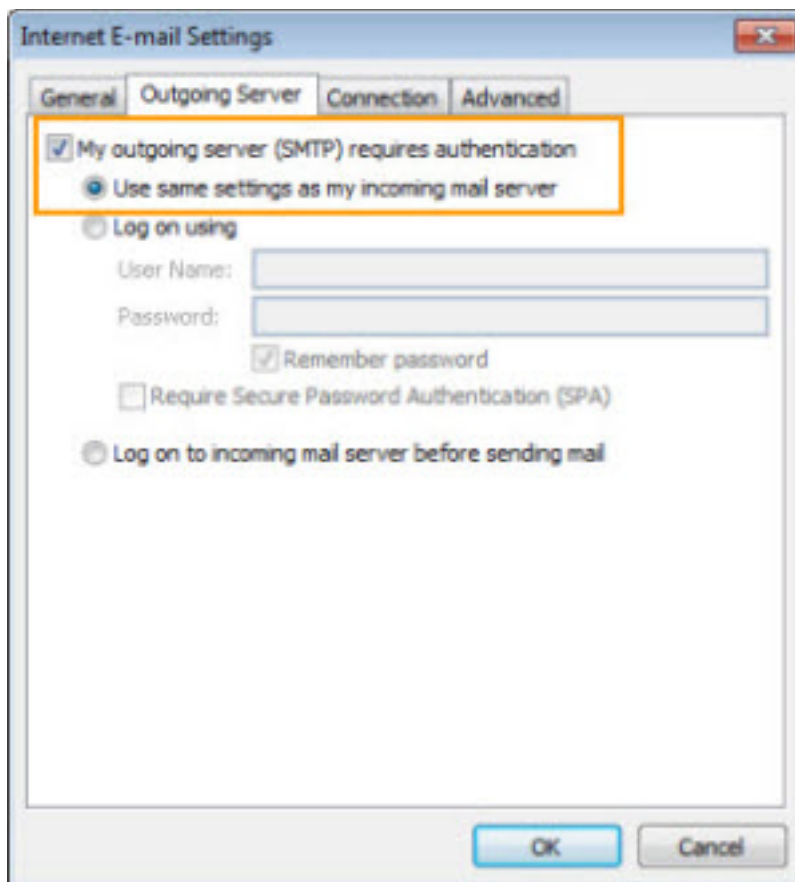
## IMAP email settings

These are the advanced settings for users that want to set up an IMAP email account using Outlook.

**Note:** Incoming server is **imap.homestead.com** and the outgoing server is **smtp.homestead.com**.

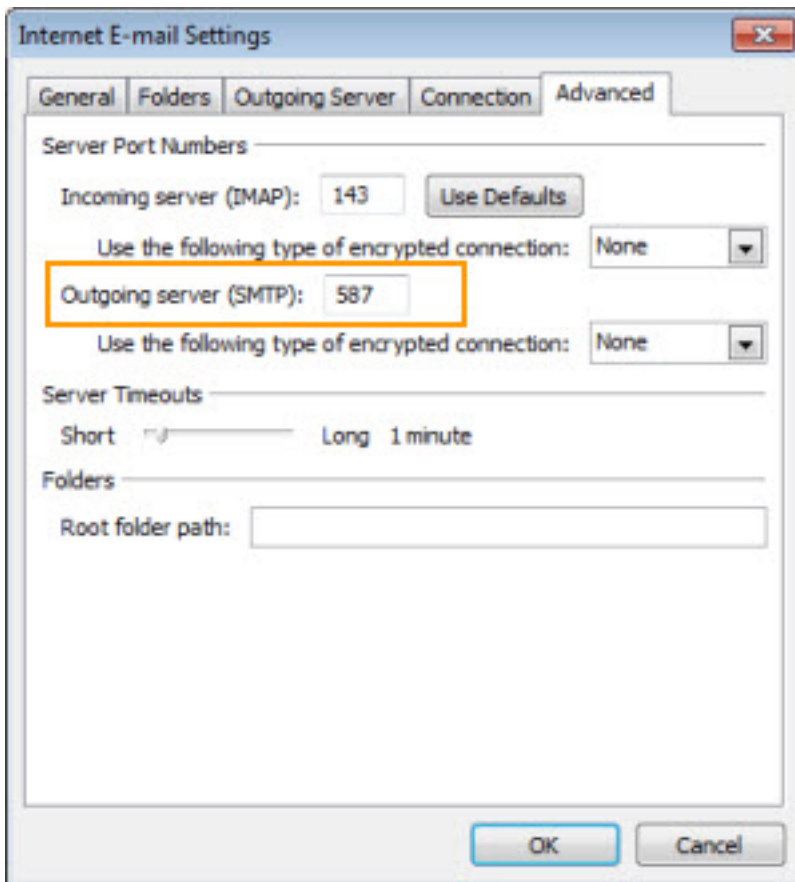
**For IMAP, confirm the advanced settings by following the steps below:**

1. Click **More Settings**.
2. Click the **Outgoing Server** tab.
3. Check the **My outgoing server (SMTP) requires authentication** checkbox. Select **Use same settings as my incoming mail server**.



**Important:** If you don't complete this step, you'll get the error message **550 #5.1.0 Address reject**.

4. Click the **Advanced** tab. You will see Server Port Numbers.



- The port number for **Incoming Server** needs to be **143**.
  - Use the following type of encrypted connection: **None**.
  - Set the Outgoing Server port number to **587**.
  - Use the following type of encrypted connection: **None**
5. Click **OK**.
  6. Click **Next** and then click **Finish**.
  7. In Outlook, click the Inbox for the IMAP account that contains a folder that you want to subscribe to or unsubscribe from.
  8. In the **Tools** menu, click **IMAP Folders** and click **Query**.
  9. In the **Folders** box, click the folder you want to subscribe to and click **Subscribe**.

10. Click **Close** to complete the set up.

**Note:** To test the settings, send a message directly from Outlook.